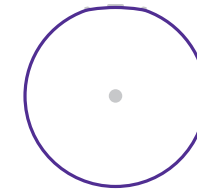
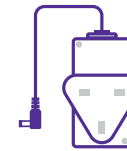




Ethernet cable



Mini Whole Home Wi-Fi disc



Power adapter
Item code 098659

What's in the box



Works with all broadband providers

Let's get started

Mini Whole Home Wi-Fi Add-on



Safety instructions and care

- Your Mini Whole Home Wi-Fi from BT is manufactured to comply with European safety standards. Please read the following instructions carefully before installing and using it. Keep these instructions safe for future reference.
- For indoor use only in UK and Ireland.
- Position all parts, including power adapters, away from heat and sun (eg electrical equipment that can get hot), cupboards or behind sofas) and don't block any vents with objects or thick carpets.
- Keep cables out of young children's reach.
- Only use power adapter item code 098659, provided by BT for this specific device; contact the BT helpdesk if you need a replacement.
- Electronic devices hate liquids; don't place devices and power adapters in damp areas or near sources of water or splashes.
- Product may cause scratches or marks if placed on fragile surfaces (eg veneered wood or delicate fabrics); place on a mat if needed.
- Designed for use at room temperatures between 0 and 40°C.

Installation and location

- If your devices or power adapters appear damaged, stop using them immediately. Switch off your electrical socket if it's safe to do so and contact the BT helpdesk.
- See terms of the guarantee.
- Don't try to open your devices or power adapters. There are no serviceable parts and you risk an electrical shock.
- This device has been evaluated for and shown to be compliant with European Guidelines when installed and operated with a minimum distance of 20cm between the unit and your body.

Warnings

- Care and maintenance
 - Dust with a soft dry cloth; don't use water or solvent.
 - Regularly check that objects don't cover any parts or any vents that could cause overheating.

Disposing of your old electrical and electronic equipment

The Government has a legal requirement to minimise the unsorted waste disposal of electrical and electronic equipment and to maximise its separate collection and environmentally sound management. The symbol shown above and on a product, means you shouldn't throw it in your normal rubbish at the end of its working life.

This product may contain substances that could be harmful to people or the environment if it's not recycled correctly. Check with your retailer to find out how to recycle your old equipment, or if you've bought something from us that has the crossed out wheellie bin symbol on it and it's similar to the kit you don't need any more, you can send us your old kit and we'll get rid of it in an environmentally friendly way. Here's the address:
WEEE Take Back Scheme, BT Returns, BT DF, Darlington Road, Northallerton, DL6 7ZY.
Website address: bt.com/weee

Radio Equipment Directive Declaration of Conformity

Hereby, British Telecommunications plc declares that the radio equipment type Mini Whole Home Wi-Fi (096448) is in compliance with Directive 2014/53/EU. The full text of the EU declaration of conformity is available at the following internet address: bt.com/wholehomewifi

Restrictions						
BE	BC	CZ	DK	DE	EE	IE
EL	ES	FR	HR	IT	CV	LV
LT	LU	HU	MT	NL	AT	PL
PT	RO	SI	SK	FI	SE	UK
NO	IS	LI	CH	TR		

Radio transmission information	
Frequency range (GHz)	2.40–2.48
Max power in the range	100mW
	5.15–5.35
	200mW

Guarantee

- Your Mini Whole Home Wi-Fi is guaranteed for two years from when you bought it. This means we'll either repair it or replace all or part of the product if it isn't working properly. If you bought the product more than 28 days ago, we might replace it with a refurbished or repaired one.
- Guarantee conditions:
 - the guarantee only covers problems found in the 2-year guarantee period
 - you'll need your receipt or other proof of purchase
 - your product is returned to BT or one of our partners as instructed
 - this guarantee doesn't cover any problems caused by accidents, misuse, fair wear and tear, neglect, tampering with the equipment, or any attempt at adjustment or repair other than through approved agents
 - this guarantee doesn't affect your statutory rights.

Power consumption (per disc)	Disc status	Watts
In operation		11.23
Network standby		2.74
Off mode		0.05
Elapsed time before going into standby mode		1 minute

Other information

Available in other formats including braille, large print or audio CD. If you would like a copy, please call 0808 100 6116*.

© British Telecommunications plc 2019
We're registered in England at 81 Newgate Street, London EC1A 7AJ, UK (company number 1800000).

All third-party trademark rights are acknowledged.

Apple and the Apple logo are trademarks of Apple Inc., registered in the US and other countries. App Store is a service mark of Apple Inc. Android, Google Play and the Google Play logo are trademarks of Google LLC.

Mini WHW Add-on 1.0

Need some help?

Go to bt.com/wholehomewifi

See frequently asked questions. It's the quickest and easiest way to get help.

Call us on 0808 100 6116*

Monday to Friday 9am to 5.30pm,
Saturday 9am to 2pm.

* Calls to our helpdesk made from the UK mainland and mobile networks are free. International call costs vary.

Let's set up your disc

Important: make sure you've already set up your Mini Whole Home Wi-Fi discs. Please **don't switch on** your new Add-on disc until the app says you can.

1 Move near your hub

You need your new disc and your mobile device with the Mini Whole Home app installed.

We'll tell you later when to move the disc to where you want it.

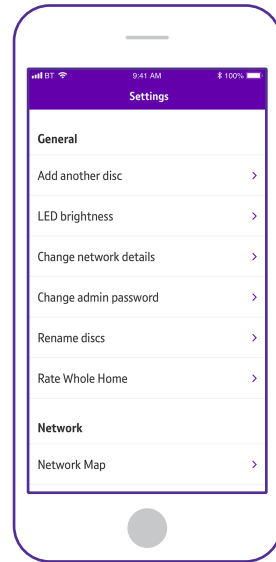
Not got the app?

Open your phone/tablet's browser and go to bt.com/WHW/app



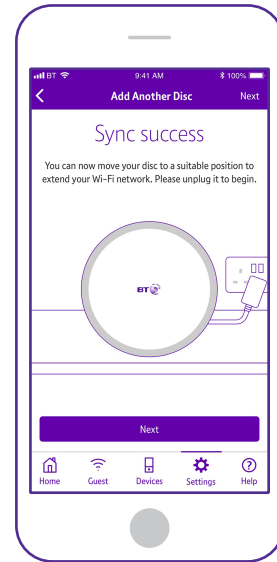
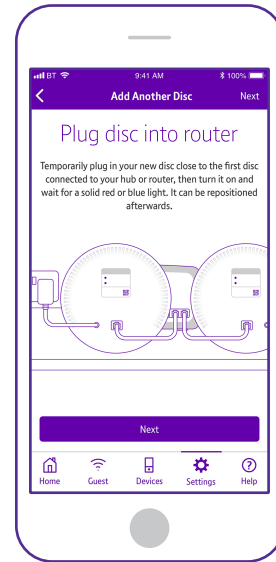
2 Open the app

Tap **Settings** then **Add another disc**.



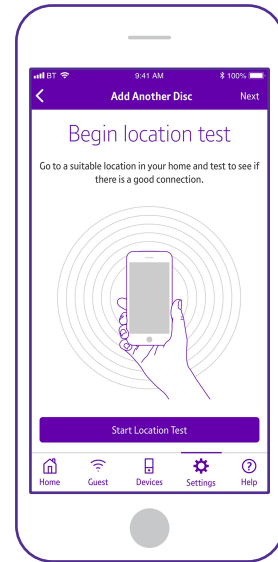
3 Sync the new disc

Follow the steps on the app to link your new disc to your existing network.



4 Locate the new disc

Use the app to find a suitable place for your new disc. The app will then tell you when to turn the disc on and finish set-up.



Wi-fi password

Your new disc uses the same wi-fi details as your existing discs. You can write these on the label on the back of your new disc.

What your disc lights mean

If your disc isn't showing a steady blue light, it might need a bit of help.

<p>Blue</p>	<p>The disc is connected and working okay</p> <p>If you can't get online, there might be a problem with your computer, tablet or mobile device</p>	<p>Slow flashing blue (every two seconds)</p>	<p>The disc is in WPS mode</p> <p>Press the WPS button on the device you want to connect</p>
<p>Fast flashing blue (every half second)</p>	<p>The disc is connecting to the Whole Home network</p> <p>Wait about 15 seconds</p>	<p>Flashing green</p>	<p>The new disc is syncing</p> <p>The light should change to blue after about a minute</p>
<p>Purple</p>	<p>The disc is starting up</p> <p>Wait a minute for it to turn blue</p>	<p>Flashing purple</p>	<p>The disc is updating itself</p> <p>Don't turn it off while it's doing this. Updating takes a couple of minutes</p>
<p>Orange</p>	<p>The disc is okay but could be closer to others</p> <p>Try moving it nearer to one of your other discs</p>	<p>Red</p>	<p>There's a problem somewhere</p> <p>Check the Ethernet connection with your hub. If needed, restart the disc (switch off then on). If the light's still red, try moving it nearer to one of your other discs</p>

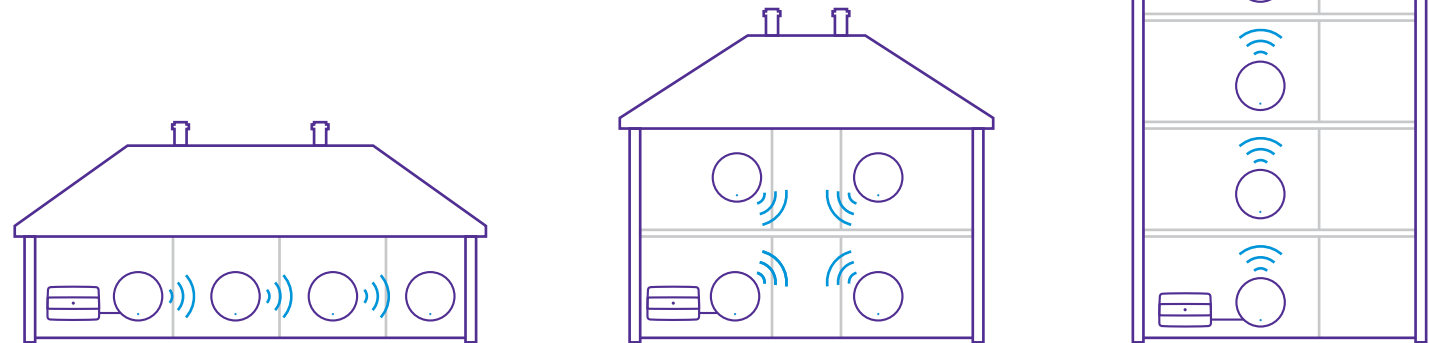
Where's best?

Follow your app's location checker to find the best place for your disc(s).

Make sure they aren't:

- covered or in a confined space – the vents on your discs should always be clear from anything that might block them
- on soft furnishings, carpets or delicate surfaces.

Here are some examples of how you might place the discs:



For extra coverage, you can buy more Mini Whole Home Wi-Fi Add-on discs at bt.com/shop
Only **Mini** Add-on discs will work with your existing Mini Whole Home Wi-Fi network.



Need to reset a disc?

Use a pin or paper clip to press the **Factory reset** button on the back of the disc for about one second.