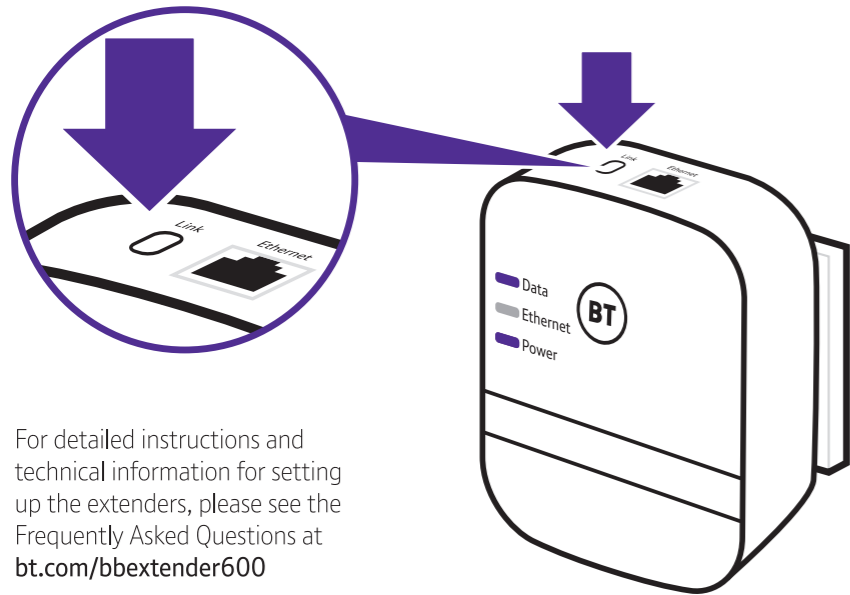


## Reset to factory settings

If your broadband extenders stop working or become unpaired, you can reset both extenders to their factory settings:

- 1 Make sure the broadband extender is plugged in and the power socket's switched on.
- 2 Press the Link button for more than 15 seconds until the **Data** and **Power** lights go out. If everything's okay, the **Power** indicator on the extenders will light up.



For detailed instructions and technical information for setting up the extenders, please see the Frequently Asked Questions at [bt.com/bbextender600](http://bt.com/bbextender600)

## Connection help

- If you are having problems synchronising one or more extenders, try resetting them to their default factory settings. Most extenders have a **Reset (Link)** button that does this. Refer to the extender user guide for more detailed information on how to add more powerline devices.
- Swap devices to help check and isolate a problem with a particular broadband extender unit.
- To check if your home's electrical wiring is affecting your broadband extenders, try plugging in extenders in the same room. Some old wiring or fuse boxes might affect your network performance
- House appliances that draw large amounts of power, like refrigerators, freezers, microwaves and air conditioning systems, might cause interference with your network
- For best network performance, use broadband extenders from BT
- If there are no spare ports on your router/hub, you can unplug one of your existing devices and use an alternative like wi-fi or purchase a switch



If you need more help, go to [bt.com/bbextender600](http://bt.com/bbextender600) or call 0808 100 6116\*.

## ⚠ Important safety and care instructions

Your Broadband Extender 600 Add-on from BT is manufactured to comply with European safety standards. Please read the following instructions carefully before installing and using it. Keep these instructions safe for future reference.

### Installation and location

- For indoor use only in UK and Ireland
- Position all parts away from heat and sun (e.g. away from radiators, window sill or other electrical equipment which can get hot)
- Keep area ventilated (e.g. don't put in cupboards or back of sofas) and don't block any vents with objects or thick carpets
- Keep device and cables out of young children's reach
- Electronic devices hate liquids; don't place in damp areas or near sources of water or splashes
- Designed for use at room temperatures between 0° and 40°C

### Care and maintenance

- Treat all parts with care; no shock or vibration, and don't pull or twist any cables
- Dust with a soft dry cloth; no water or solvent
- Regularly check that objects don't cover any parts or any vents which could cause overheating
- When not in use, store in a dry place and away from extreme heat or cold

### Warnings

- If any parts of your product or any cables appear damaged, discontinue use immediately. Switch off your electrical socket if it is safe to do so and contact our helpdesk. See terms in the Guarantee section of this guide
- Don't try to open your device. There are no serviceable parts and you risk an electrical shock.
- If you've got a pacemaker please check with your doctor before installation

### Find out more

If you need more help, go to [bt.com/bbextender600](http://bt.com/bbextender600) where you can view Frequently Asked Questions

If you cannot find the answer to your problem in the Frequently Asked Questions, then please call our free Helpline on **0808 100 6116\***.

Our dedicated advisors are more likely to be able to help you than the retailer where you made your purchase.

\* Calls made from within the UK mainland network and mobile networks are free. International call costs vary.

## Other information

### Disposing of your old electrical and electronic equipment

The Government has a legal requirement to minimise the unsorted waste disposal of electrical and electronic equipment and to maximise its separate collection and environmentally sound management. The symbol shown here and on a product, means you shouldn't throw it in your normal rubbish at the end of its working life.

This product may contain substances that could be harmful to people or the environment if it's not recycled correctly. Check with your retailer to find out how to recycle your old equipment, or if you've bought something from us that has the crossed out wheelee bin symbol on it and it's similar to the kit you don't need any more, you can send us your old kit and we'll get rid of it in an environmentally friendly way.

Here's the address: WEEE Take Back Scheme, BT Returns, BT DF, Darlington Road, Northallerton, DL6 7ZY.

Website address: [bt.com/weee](http://bt.com/weee)

We're not responsible for the costs of returning items. If you don't wish to return kit to us, lots of electronics shops have their own 'take back' schemes where you can recycle very small electrical and electronic goods. If you're a household user, you can also take it to your local recycling centre – go to [recyclenow.com](http://recyclenow.com) to find the one nearest to you. Please dispose of this carefully and help to protect our planet.



### EMC Directive & Low Voltage Directive Declaration of Conformity

This equipment complies with the essential requirements for the EMC Directive (2014/30/EU) and the Low Voltage Directive (2014/35/EU).

The full text of the EU declaration of conformity is available at the following internet address: [bt.com/bbextender600](http://bt.com/bbextender600)

The Broadband Extender 600 contains code that is covered by the GNU General Public License (GPL). In accordance with the GPL, BT has made the relevant code available for download at [bt.com/help/gplcode](http://bt.com/help/gplcode)

### Power consumption

|   |           |
|---|-----------|
| In operation                                | 2.5 Watts |
| Network standby                             | 1.9 Watts |
| Standby mode                                | 0.4 Watts |
| Elapsed time before going into standby mode | 5 minutes |

## Guarantee

Your Broadband Extender 600 Add-on is guaranteed for 3 years from when you bought it. This means we'll either repair it or replace all or part of the product if it's not working properly. If you bought the product more than 28 days ago, we might replace it with a refurbished or repaired one.

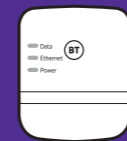
Guarantee conditions:

- The guarantee only covers problems found in the 3 year guarantee period
- You'll need your receipt or other proof of purchase
- Your product is returned to BT or one of our partners as instructed
- This guarantee doesn't cover any problems caused by accidents, misuse, fair wear and tear, neglect, tampering with the equipment, or any attempt at adjustment or repair other than through approved agents
- This guarantee doesn't affect your statutory rights

To find out what to do if your extender is in or outside of the 3 year guarantee, please see the FAQ at [bt.com/bbextender600](http://bt.com/bbextender600)

## Check the box contents

### Broadband Extender 600



### Ethernet cable



## Broadband Extender 600 Add-on User Guide

Available in other formats including braille, large print or audio CD. If you would like a copy, please call 0808 100 6116\*.

© British Telecommunications plc 2021  
We're registered in England at 81 Newgate Street, London, EC1A 7AJ, UK  
(company number 1800000).

\* Calls to our helpdesk made from the UK mainland and mobile networks are free. International call costs vary.

Broadband Extender 600 Add-on (02/21) Issue 1

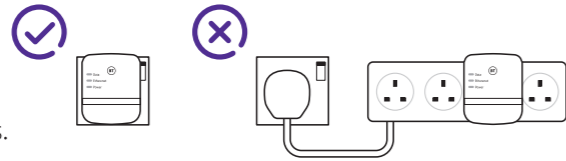


## How to set up and get connected

You can expand your home network by adding more extenders to your existing kit.

### ★ Important

To work properly, extenders must be plugged directly into the wall socket and not into extension leads.



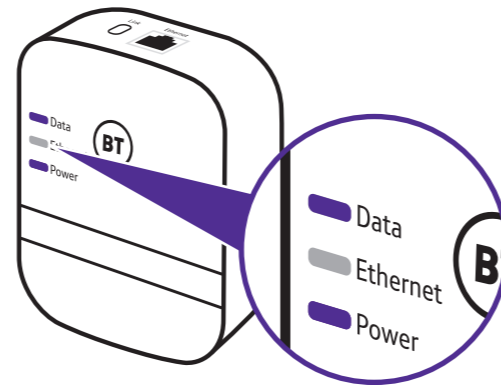
- 1 Plug your additional broadband extender directly into a wall power socket. Make sure the socket's switched on.



### ★ Tip

You might find it easier to plug your new broadband extender in the same double power socket or near one of your existing ones whilst you set things up.

- 2 Press the **Link** button on that extender for 5 to 8 seconds. Wait for the **Power** light to go back to steady green.
- 3 Press the **Link** button again, this time for 1 second.
- 4 Within 2 minutes, press the **Link** button on one of the broadband extenders already in your home for 1 second to complete the connection to the network.
- 5 Wait for connection to complete. If everything's okay, the **Power** and **Data** indicators on the extender will light up.

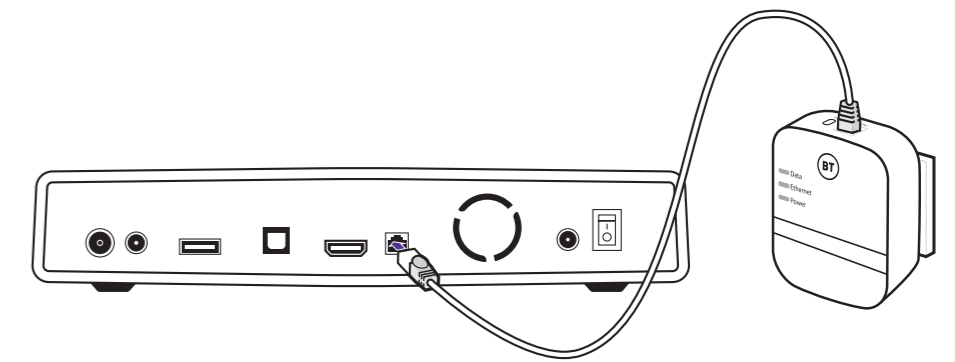


### ★ Important

See Connection help overleaf if the **Data** indicator doesn't light up on the extenders.

## Connect your device

If the connection is successful, connect your device to the broadband extender using the ethernet cable provided.



### ★ Important

After 5 minutes of inactivity on the ethernet port, the extender will go into power save mode. The **Power** indicator will be flashing.

## Light status

| Light           | Status   | What's happening  |
|-----------------|----------|---|
| <b>Power</b>    | On       | Extender running normally   |
|                 | Flashing | Extender resetting, synchronising or power save mode  |
|                 | Off      | Extender turned off   |
| <b>Ethernet</b> | On       | Device connected to extender  |
|                 | Flashing | Data being sent or received   |
|                 | Off      | No device connected to extender or device switched off  |
| <b>Data</b>     | On       | Extender connected to network<br>Green: High transfer speed<br>Orange: Medium transfer speed<br>Red: Low transfer speed |
|                 | Off      | No connection to network  |

## Link button

| What do you want to do?       | Press and hold button                                   |
|-------------------------------|---|
| Prepare to join a new network | 5 to 8 seconds  |
| Join a new network            | 1 second  |
| Reset to factory settings     | More than 15 seconds until Data and Power lights go out |

### ★ Tip

You may find it helpful to use a watch or a clock when using the **Link** button.

